



Building Protection System

PRODUCT CATALOG

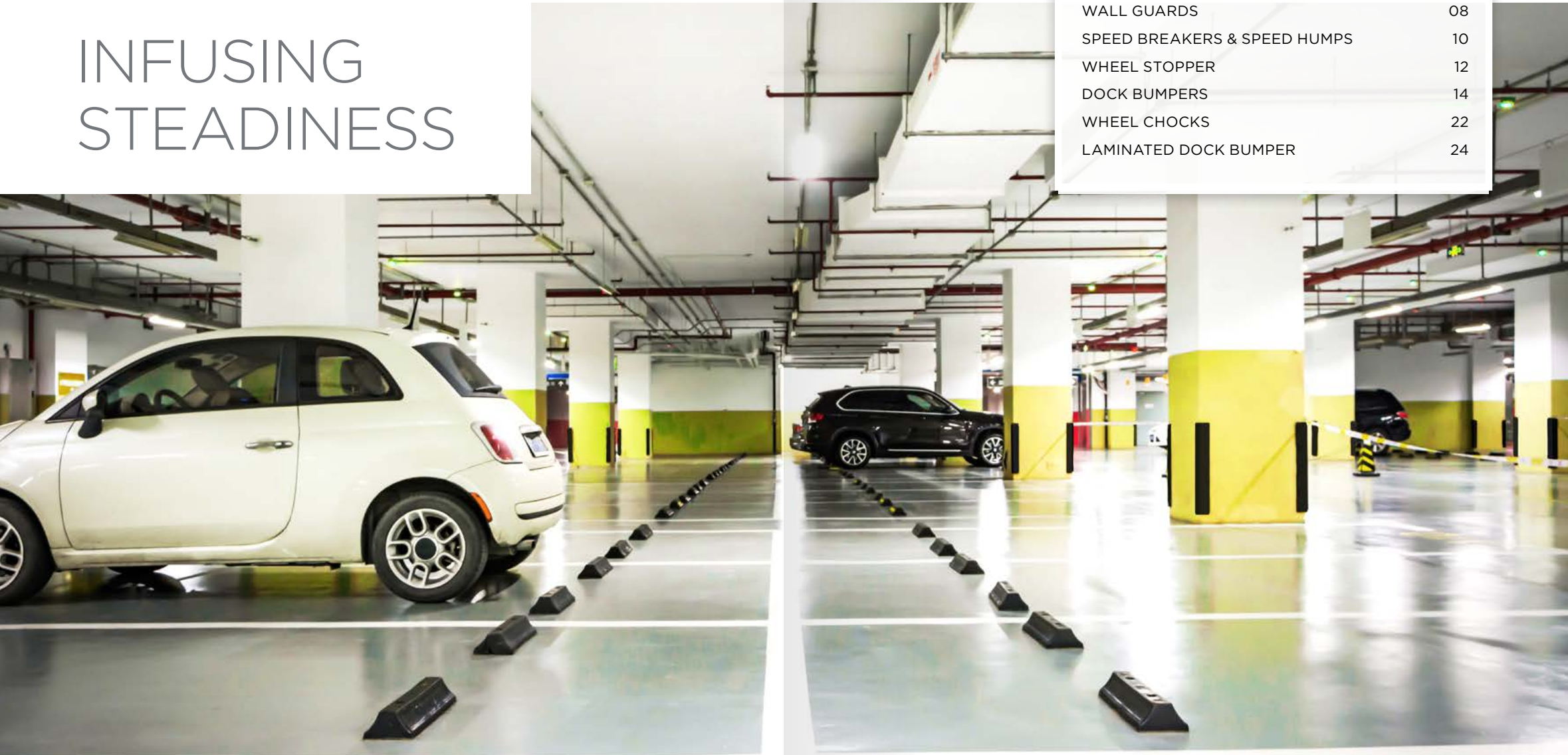




INFUSING STEADINESS

CONTENTS

ABOUT US	05
CORNER GUARDS	06
WALL GUARDS	08
SPEED BREAKERS & SPEED HUMPS	10
WHEEL STOPPER	12
DOCK BUMPERS	14
WHEEL CHOCKS	22
LAMINATED DOCK BUMPER	24





ABOUT US

Ismat is a high-concept, technically sophisticated manufacturer of rubber moulded, extruded, lining and polyurethane products.

Based in Sharjah - UAE since 1994, we cater to large OEMs in the construction, marine, oilfield and other manufacturing sectors for all their rubber requirements.

The founder, Mr. Yakub envisioned Ismat as a forward-thinking engineering company driven by innovation and a passion for state-of-the-art products that meet the accelerating demands of our customers.

THE ISMAT CHRONICLE

1994

Established Ismat Rubber

Ismat set up a manufacturing unit, targeted to the rubber needs of construction, oilfield, marine and automobile industries in the UAE. With a strong technical background and reinforcement from Ismat Chennai, the company quickly established itself as one of the leading solution providers for rubber and engineering products in the region.

1996

Expansion into Rubber Extrusion

Having the foresight to anticipate a demand for extruded products, Ismat built a full-fledged rubber extrusion plant. Our proliferating product portfolio served a rapidly expanding customer base more effectively than ever.

2000

Consolidation of A Growing Titan

Exponential growth necessitated a move to bigger premises. The new location admitted an expandable superstructure of 20,000 square feet, in Sharjah's prime Industrial area 15. In the same year Ismat was also awarded the prestigious ISO 9001 certificate.

2002

Diversification into Manifold Products

Ismat began to spread its wings, taking on the new lining business. We launched into the manufacture of all types of rubber rollers for conveyor systems, the printing industry, as well as rubber lining of butterfly valves, tanks and pipes.

2007

Escalation with Polyurethane Production

Always ahead of the curve, Ismat grasped the potential of polyurethane early on, and set up a division to manufacture it. The outstanding engineering properties of this compound makes it ideal for demanding mechanical, chemical, thermal and electrical applications. By now, Ismat was clearly on the forefront of business, becoming a reliable provider for a comprehensive range of rubber products in the market in the region.

2010

Pioneering Green Production with Terrain

Being a future-oriented company, Ismat took proactive steps in going green. Our Terrain flooring products utilize recycled automotive tyres - a smart, ecologically responsible innovation that goes a long way towards protecting the environment.

2016

Acceleration with Anti-Vibration Mounts

Noise pollution is a serious health and safety hazard. Ismat is once again taking the lead in addressing this problem with breakthrough technology. Our BULWARK division manufactures a catalog of cutting edge mounts designed to reduce noise and vibration, contributing to a quieter work and living environment.

2019

Upgrading the manufacturing facility is KEY to any industry

Additions on new hydraulic molding presses, fully automated VMC Machines for tooling, a new integrated storage facility and a revamped state of the art laboratory are just some of the initiatives taken in 2019. The company also complied with the new ISO 9001 2015 QMS, ISO 14001 2015 HSE and 45001 2018 OHSAS with an eye to comply with the requirements of its international audience.

CORNER GUARDS

Corner guards are designed to give drivers the maximum visibility using black and yellow stripes, the correct hazard warning colours. The solid rubber buffer's wrap-around design protects your property corners, columns and entrances that are exposed to vehicle and warehouse traffic. The corners guards can be securely fitted to concrete or brickwork, plain or plastered.

Our corner guards come in options of all-black rubber extrusion and/or with illuminated yellow strips on both arms of the guards. Our corner guards are designed to take the impact from vehicular hits. While the metal retainers protect the concrete wall against impact, the rubber protects the vehicles

from getting damaged. BULWARK corner guards come in a wide range to suit specific requirements.

Assemble/installation With metal backup sheet: Fix the metal backup plate on the wall by drilling 6 holes in a 'Z' format (Diagonally opposite). Fasten with GI screw and rawl plug M6 x 40 mm

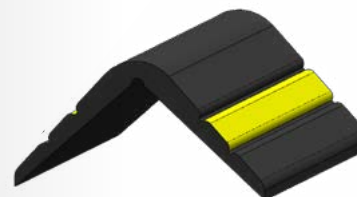
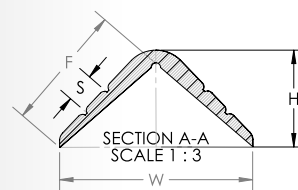
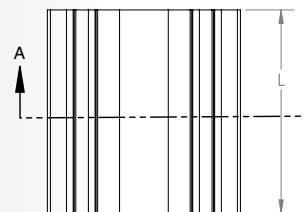
Slide the rubber profile over the fixed metal sheet to complete the fixing process.

Without metal backup sheet: Fix using a combination of epoxy adhesive and mechanical fasteners (GI flat screw) size between 4-6 mm as per desired lengths.



TYPE A

Without Galvanised Iron Retainers. Sticking Type. All Black

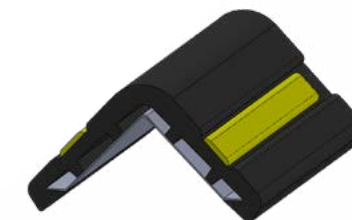
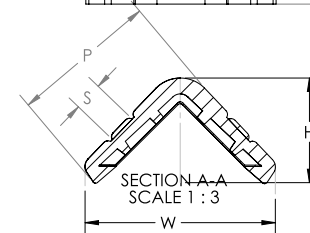
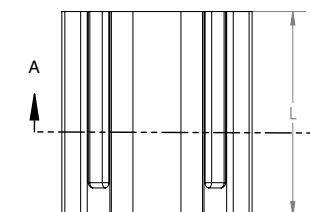


TYPE C

Without Galvanised Iron Retainers. Sticking Type. Black with Yellow Strips

TYPE B

With Galvanised Iron Retainers. All Black



TYPE D

With Galvanised Iron Retainers. Black with Yellow Strips.

SIZES: WING SIZE

55 x 55	65 x 65	75 x 75	90 x 90	100 x 100	120 x 120
---------	---------	---------	---------	-----------	-----------

STANDARD LENGTH

1 meter	1.2 meter
---------	-----------

WALL GUARDS

A range of solid rubber wall guards designed to be easily and securely fixed to walls. The guards can wrap around steel or concrete bollards, absorbing impact and reduce damage to property. The guard is supplied in a large range of thicknesses and widths.

The screw head is concealed in the recessed grooves, stopping any accidental damage to property or vehicles. This range of buffers can be fixed horizontally or vertically along walls, round columns and Ramp areas. The wall buffers can be fitted to many surfaces: bricks, plaster, steel and concrete.

Designed to absorb impact damage in loading bays, service areas and car parks, the solid rubber guards are fixed at a distance of 500 mm to accommodate the anchor bolts and reduce the risk of accidental damage.

We supply the 'E' guards cut to the exact length to suit your site requirements.

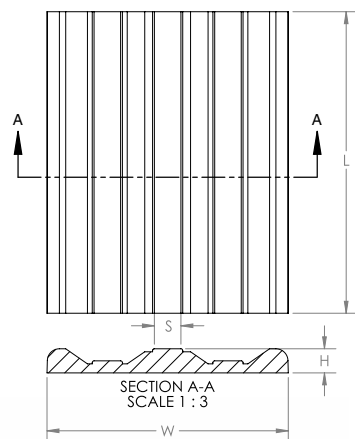
SIZES AVAILABLE:

All Dimensions in mm. Overall Dimensional Tolerances +/-5 %. Available in Full Black and with Yellow strip. Available in variable lengths.

TYPE A

DIMENSIONS

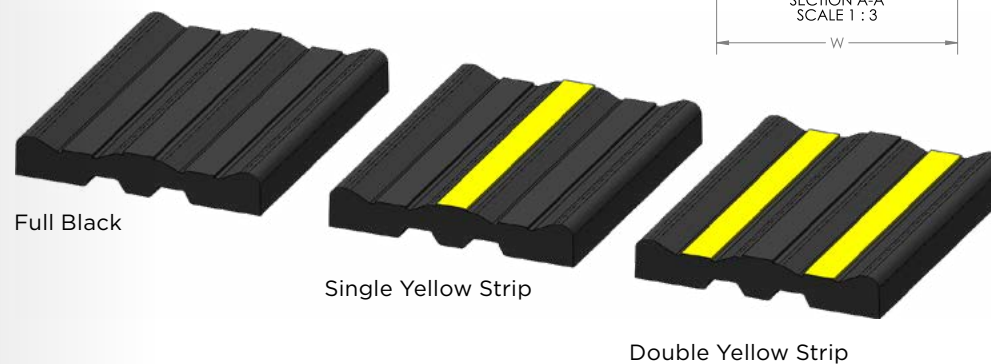
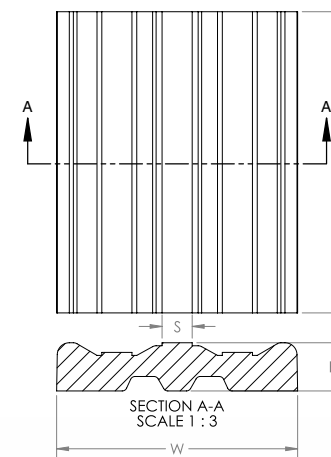
CODE	WIDTH	THICKNESS
RWA20020	200	20
RWA20025	200	25
RWA20030	200	30



TYPE B

DIMENSIONS

CODE	WIDTH	THICKNESS
RWB20040	200	40
RWB20045	200	45
RWB20050	200	50



SPEED BREAKERS & SPEED HUMPS

BULWARK speed humps offer the best solutions for slowing down traffic safely. Installing our ramps will reduce the risk of accidents on your site. As manufacturers, our product range gives you best quality rubber, with the longest working life.

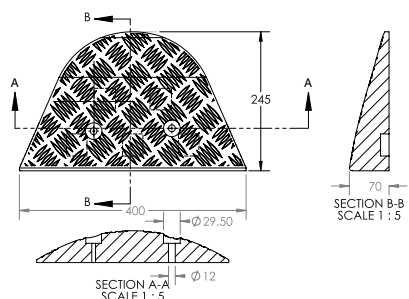
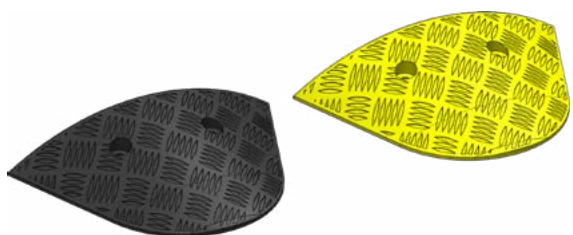
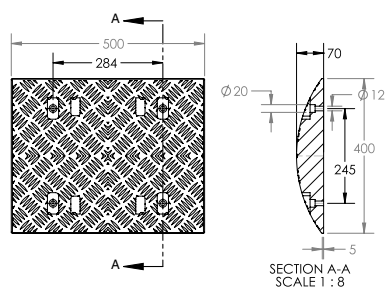
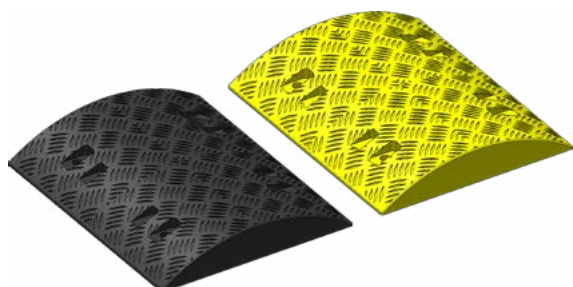
Our speed humps are designed to enforce safe site speed limits slowing down all types, sizes and weights of vehicles.

Our speed humps are manufactured in Black and Yellow colour along with powerful amber reflectors which help drivers get the maximum warning and ensure that the ramps can be clearly seen 24/7.

Speed Bumps ramps have deep ribbed surfaces for extra grip and are supplied with suitable holes by our company and can be easily fixed in asphalt, concrete or block surfaces



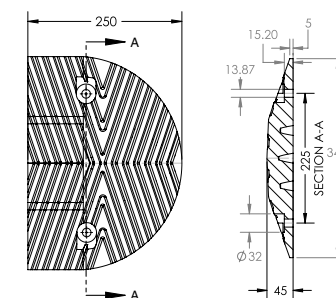
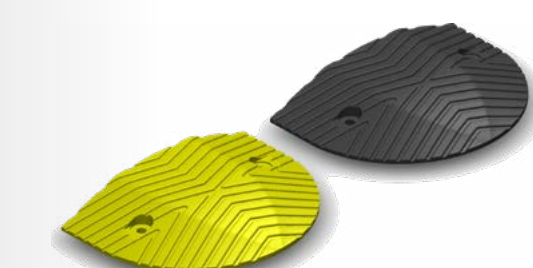
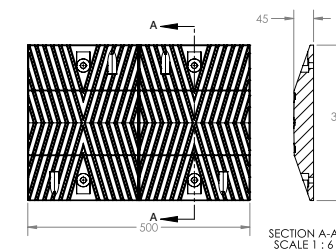
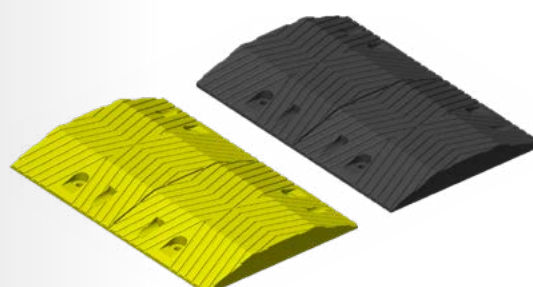
TYPE A - PARABOLIC



DIMENSIONS

CODE	WIDTH(A)	LENGTH (A)	HEIGHT (C)	SPEED LIMIT KM/H
SH40050050	400	500	50	15-20
SH40050070	400	500	70	10-15

TYPE B - TRAPEZIUM



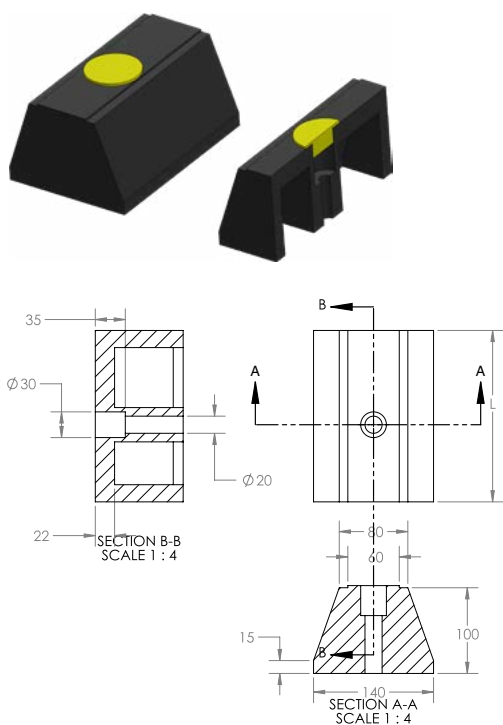
DIMENSIONS

CODE	WIDTH(A)	LENGTH (A)	HEIGHT (C)	SPEED LIMIT KM/H
SH35050045	350	500	45	15 -20
SH35050050	350	500	50	10 - 15

WHEEL STOPPER

They are designed not to cause any damage to vehicles. KerbStopper Buffers give the drivers a clear warning that their rear wheels are parked correctly. They are supplied with Pre-drilled holes for concrete or asphalt installations.

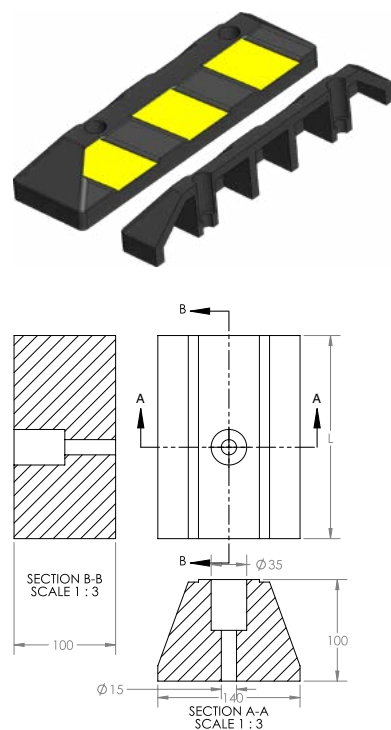
HOLLOW TYPE 1



DIMENSIONS

CODE	WIDTH	HEIGHT	THICKNESS
WSH140100	140mm	100mm	1800mm

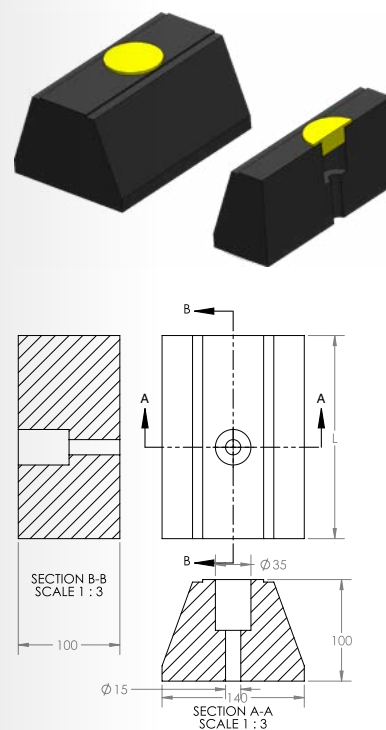
HOLLOW TYPE 2



DIMENSIONS

CODE	WIDTH	HEIGHT	THICKNESS
WSH150100	150mm	100mm	550mm

SOLID TYPE



DIMENSIONS

CODE	WIDTH	HEIGHT	THICKNESS
WSH140100	140mm	100mm	1800mm

The KerbStoppers reduce the risk of accidental damage to columns, concrete pillars and lighting columns, etc. KerbStopper Buffers are manufactured in solid rubber for a tough service life. The product absorbs impact and quickly recovers back to its original shape when the load is removed.

Kerbstopper Buffers are cut to the exact size to suit your site plus or minus 10 mm. The product can be delivered in an all-black rubber finish recommended for car parking, or black with a bright yellow stripe, the correct hazard warning colors.

SIZES AVAILABLE:

All Dimensions in mm. Overall Dimensional Tolerances 3 5%. Available in variable lengths.



DOCK BUMPERS

Bulwark Bumpers are manufactured for heavy-duty protection of walls, rails, docks, truck bumpers, utility trailers, carts, forklifts, and other places where metal to surface contact is harsh and continuous.

FEATURES

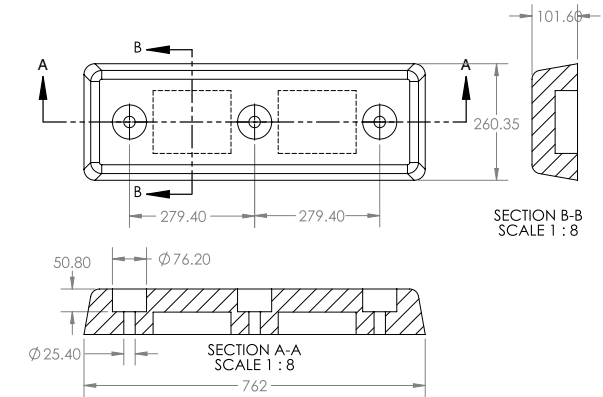
- made with high tensile, abrasion-resistant rubber compounds in molded and extruded shapes and styles
- containing the right amount of resiliency to absorb pressure and impact shock without causing any damage to truck or dock. Unique design and construction achieves high impact resistance and long life
- immune to all weather conditions and maintenance free

S No.	TEST NAME	TEST METHOD	UNIT	SPEC (LIMIT)
1	Hardness	ASTM D2240-97	SHORE A	70-80
2	Tensile strength	ASTM D412-98a	PSI	1000-1500
3	Elongation @break	ASTM D412-98a	%	50% max
4	Compression set (70°C/22h)	ASTM D395-98	%	25% max
5	Specific gravity	ASTM D792	G/CM3	1.15-1.35
6	Aging test (70°C/168 h)	ASTM D573-99		
6.1	Hardness change	ASTM D2240-97	SHORE A	±8
6.2	Tensile strength change	ASTM D412-98a	PSI	±50
6.3	Elongation @ break change	ASTM D412-98a	%	10%

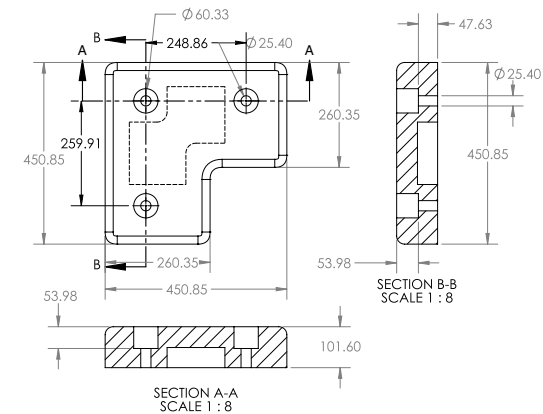
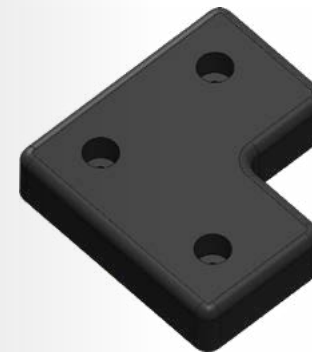
*good UV and ozone resistance
 *good weather resistance
 *working temperature. -25°C to 60°C



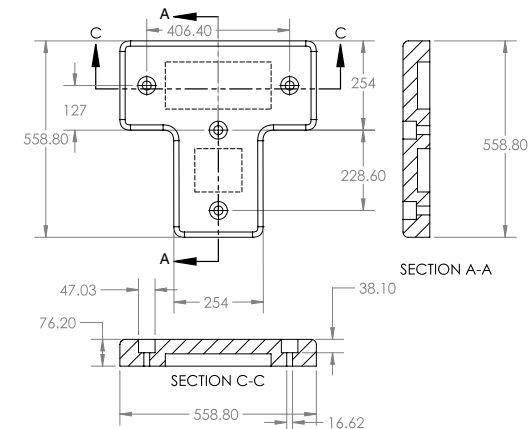
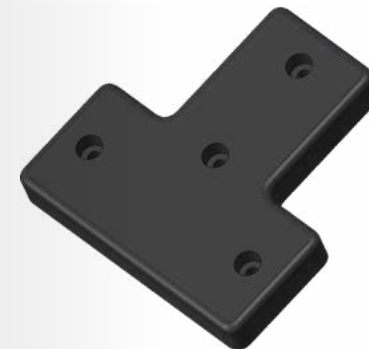
DOCK BUMPERS - TYPE 1



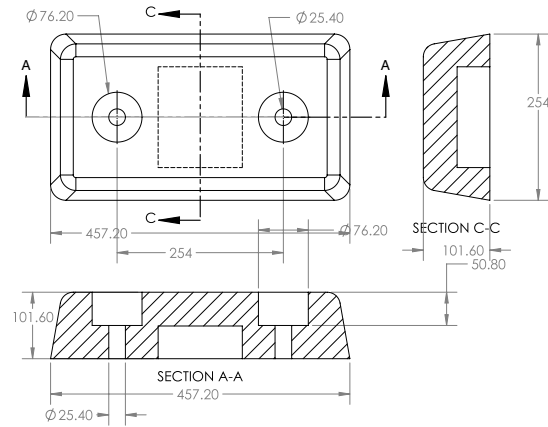
DOCK BUMPERS - TYPE 2



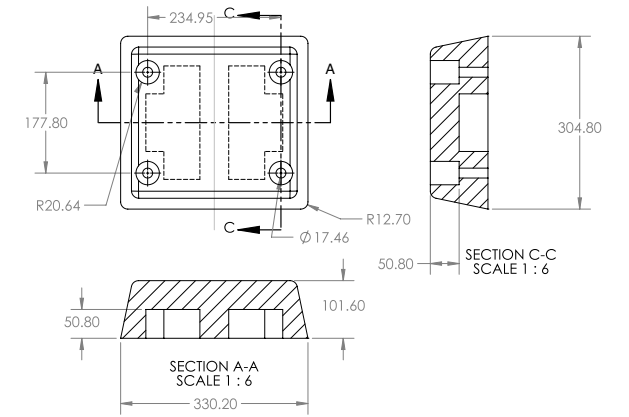
DOCK BUMPERS - TYPE 3



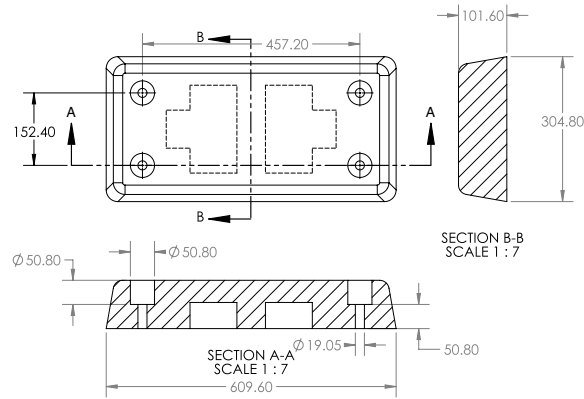
DOCK BUMPERS - TYPE 4



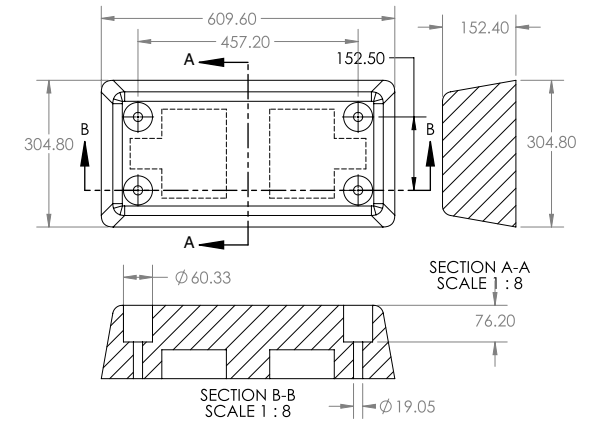
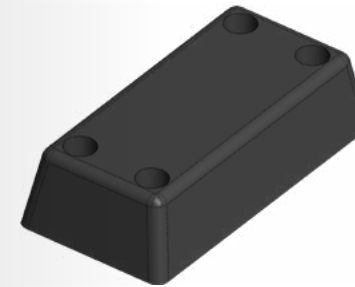
DOCK BUMPERS - TYPE 7



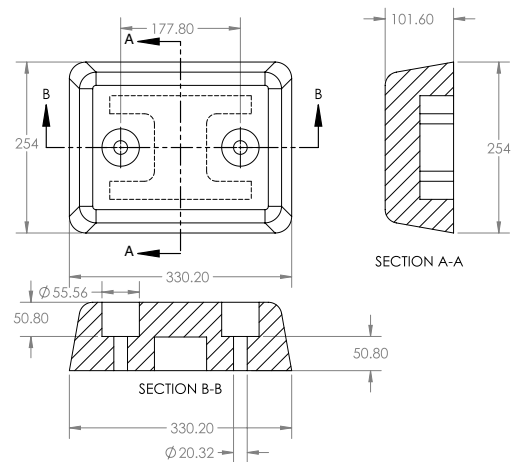
DOCK BUMPERS - TYPE 5



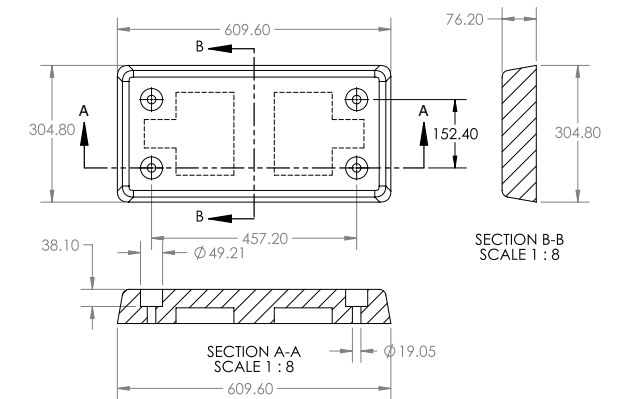
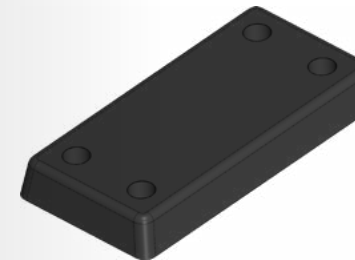
DOCK BUMPERS - TYPE 8



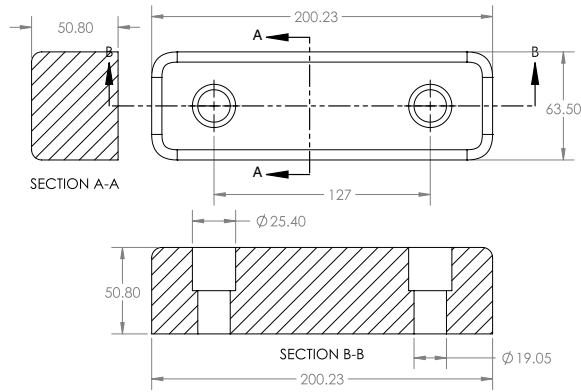
DOCK BUMPERS - TYPE 6



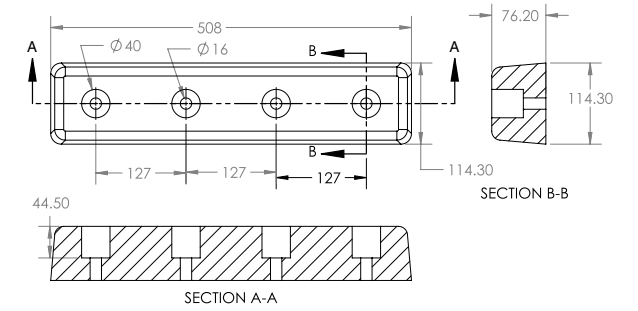
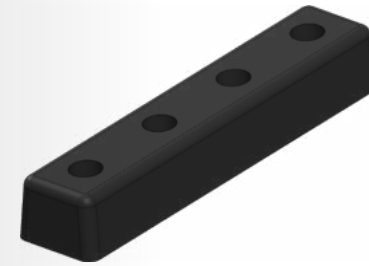
DOCK BUMPERS - TYPE 9



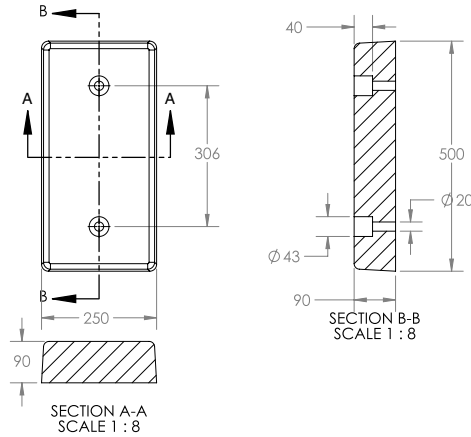
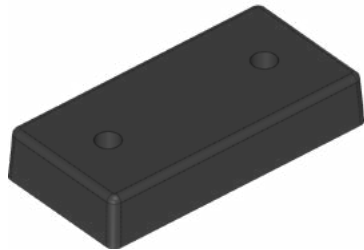
DOCK BUMPERS - TYPE 10



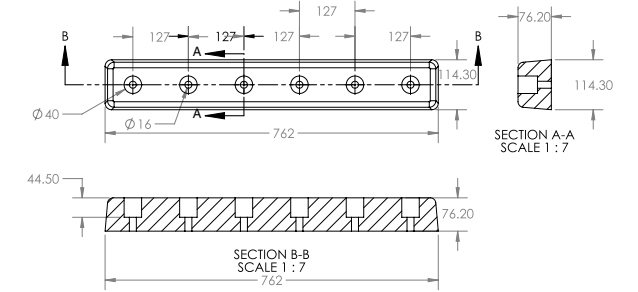
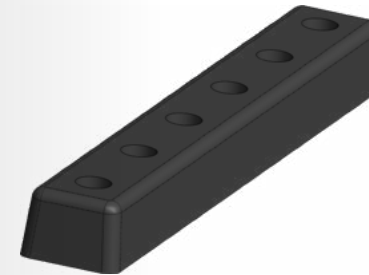
DOCK BUMPERS - TYPE 13



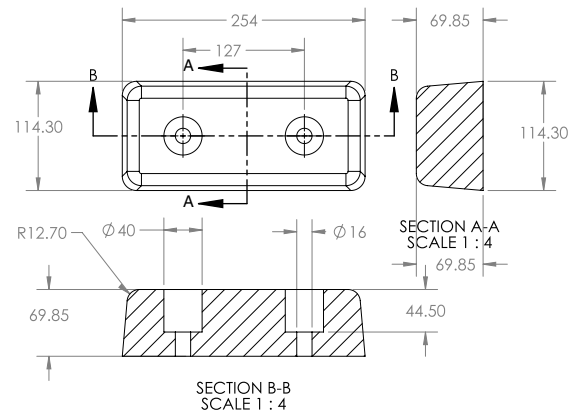
DOCK BUMPERS - TYPE 11



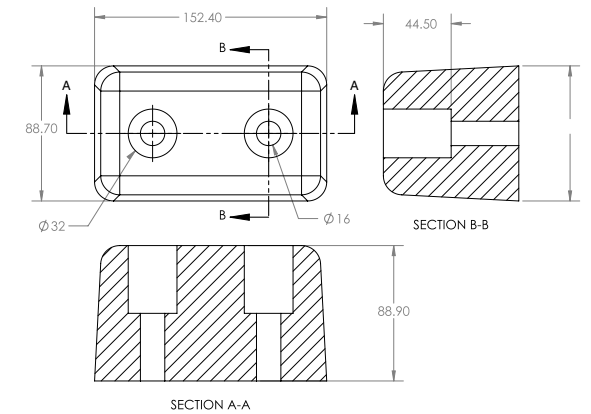
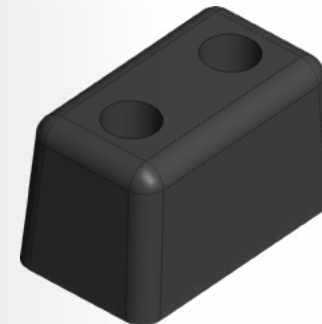
DOCK BUMPERS - TYPE 14



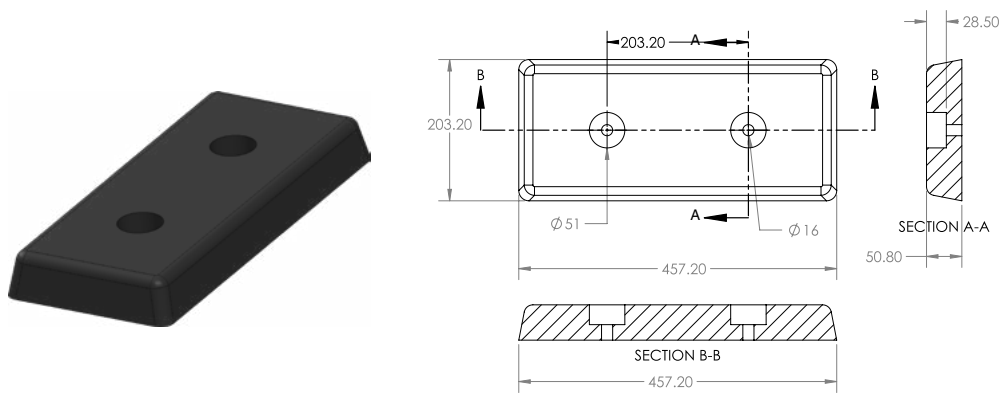
DOCK BUMPERS - TYPE 12



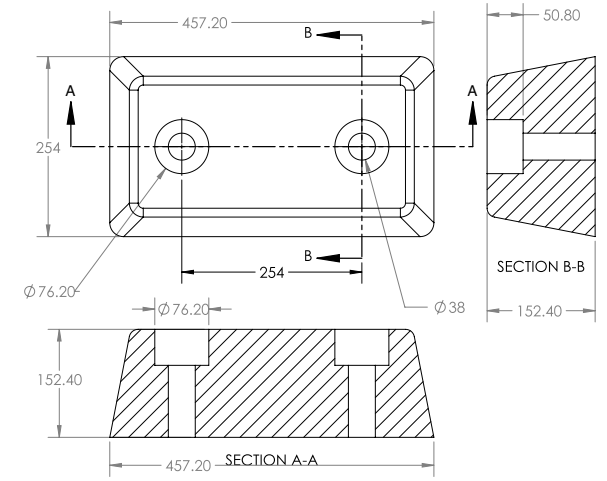
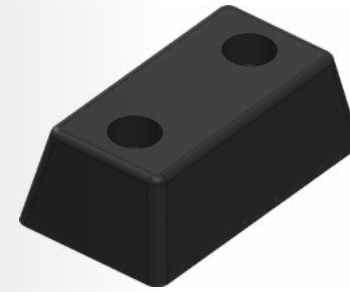
DOCK BUMPERS - TYPE 15



DOCK BUMPERS - TYPE 16



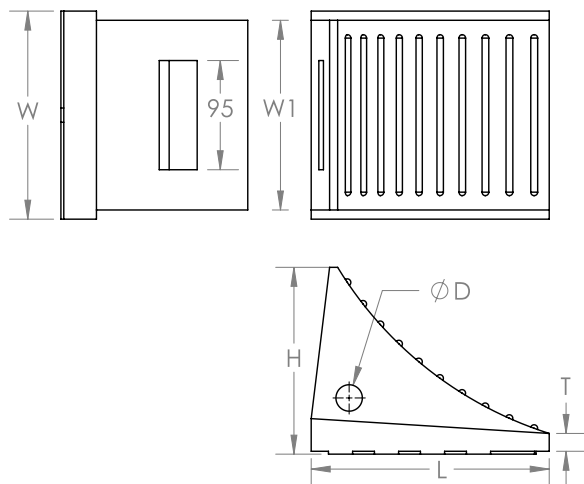
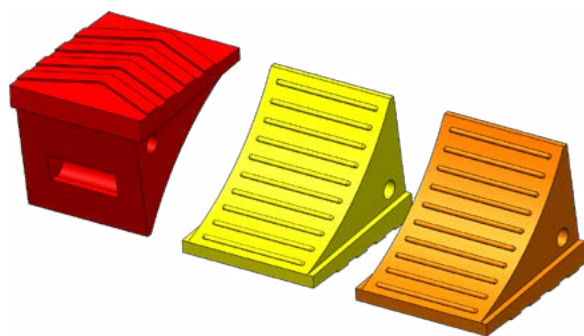
DOCK BUMPERS - TYPE 17



WHEEL CHOCKS

Wheel chocks are used for safety and accident prevention. Chocking, also known as blocking, is done to prevent trucks, airplanes and trailers from unintentionally moving, like rolling or overturning, while workers are loading, unloading, hitching, unhitching or servicing the vehicle.

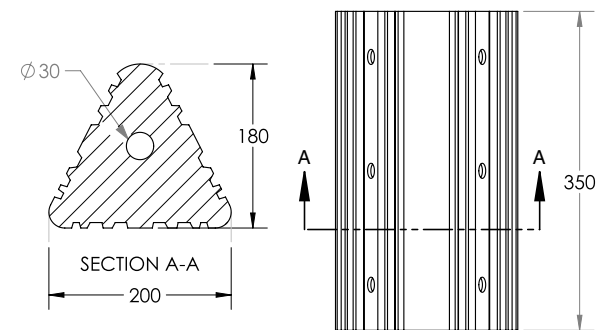
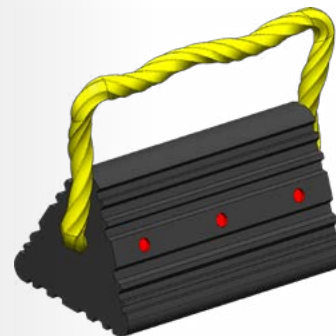
PU WHEEL CHOCK



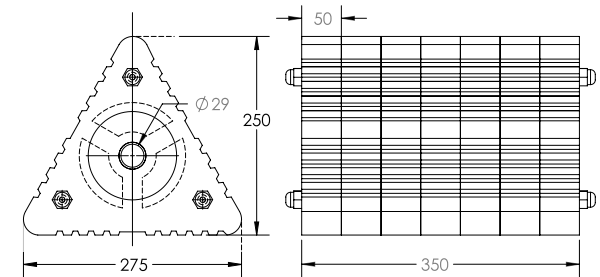
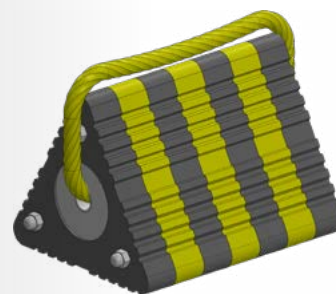
DIMENSIONS

PART NO	L	T	D	H	W	W1
PUWC01	205	15.5	23	160	180	165
PUWC02	280	16.5	33	210	220	200

RUBBER WHEEL CHOCK TYPE A



RUBBER WHEEL CHOCK TYPE B



LAMINATED DOCK BUMPER

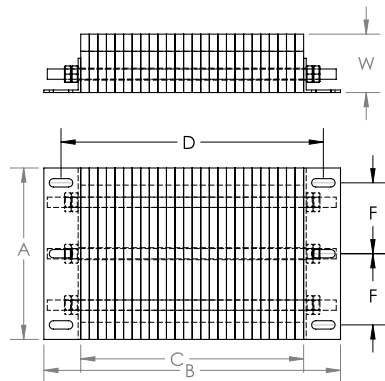
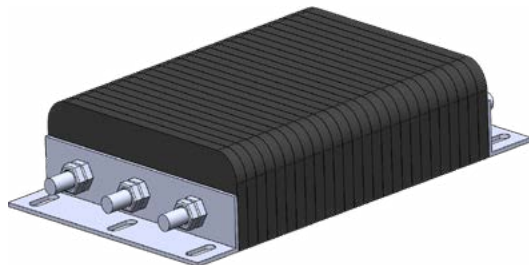
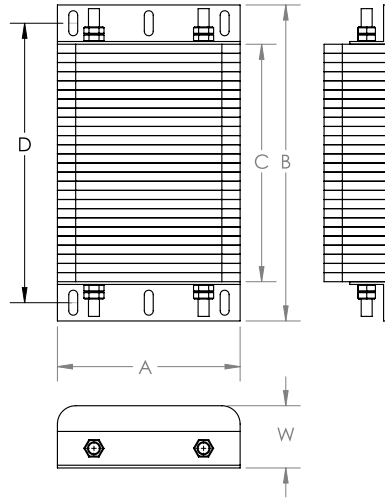
Bulwark Dock Bumpers are weather resistant, easily installed and long lasting to protect dock equipment, building walls and truck cargo from potential damage.

Bumper projection should be specified at not less than 4". For recessed docks or special applications, additional projection may be required.

Assembly, Installation.

All laminated dock bumpers are assembled with two 3" x 3" x 1/4" thick steel angles. The angles are fastened with threaded rod and nut.

All exposed metal parts are factory painted. We recommend all bumpers to be installed 1" to 2" below dock level. Use 3/4" or 5/8" expansion bolts with a minimum length of 3".




DIMENSIONS

CODE	THICKNESS OUT FROM DOCK (W)		OVERALL SIZES (AXB)		RUBBER SURFACE (AXC)		PCD (LENGTH) D		PCD (WIDTH) F	
	INCH	MM	INCH	MM	INCH	MM	INCH	MM	INCH	MM
D110	4.5	114	6 x 6	152 x 405	6 x 11	152 x 280	14	355	3	75
D111	4.5	114	6 x 26	152 x 660	6 x 21	152 x 535	24	610	3	75
D112	4.5	114	6 x 38	152 x 965	6 x 33	152 x 840	36	915	3	75
D113	4.5	144	10 x 16	254 x 405	10 x 11	254 x 280	14	355	6	152
D114	4.5	144	10 x 20	254 x 510	10 x 15	254 x 380	18	455	6	152
D115	4.5	144	10 x 26	254 x 660	10 x 21	254 x 535	24	610	6	152
D116	4.5	144	10 x 38	254 x 965	10 x 33	254 x 840	36	915	6	152
D117	4.5	144	12 x 16	305 x 405	12 x 11	305 x 280	14	355	4	100
D118	4.5	144	12 x 20	305 x 510	12 x 15	305 x 380	18	455	4	100
D119	4.5	144	12 x 26	305 x 660	12 x 21	305 x 535	24	610	4	100
D120	4.5	144	12 x 38	305 x 965	12 x 33	305 x 840	36	915	4	100
D121	4.5	144	20 x 13	510 x 330	20 x 8	510 x 205	11	280	7	175
D122	4.5	144	24 x 13	610 x 330	24 x 8	610 x 205	11	280	9	230
D123	4.5	144	36 x 13	915 x 330	36 x 8	915 x 205	11	280	10	254
D124	6	152	10 x 16	254 x 405	10 x 11	254 x 280	14	355	6	152
D125	6	152	10 x 26	254 x 660	10 x 21	254 x 535	24	610	6	152
D126	6	152	10 x 38	254 x 965	10 x 33	254 x 840	36	915	6	152
D127	6	152	20 x 13	510 x 330	20 x 8	510 x 205	11	280	7	175
D128	6	152	12 x 16	305 x 405	12 x 11	305 x 280	14	355	4	100
D129	6	152	12 x 26	305 x 660	12 x 21	305 x 535	24	610	4	100
D130	6	152	12 x 38	305 x 965	12 x 33	305 x 840	36	915	4	100
D131	6	152	24 x 13	610 x 330	24 x 8	610 x 205	11	280	9	230
D132	6	152	36 x 13	915 x 330	36 x 8	915 x 205	11	280	10	254



 +971 6 534 5881 | +971 6 534 5883

 PO BOX 23974, Sharjah, UAE

 admin@ismatrubber.com

 www.ismatrubber.co

